

NEW PRODUCTS



available for excavators 1-25 metric tons

LOG GRAB WITH ROTATOR & FLANGE

For lifting and moving material

- grab made of heavy-duty steel
- bronze bushings
- cylinder max. 250 bar
- rotator

available for excavators 1-20 metric tons



FINGER GRAB WITH SLEW RING

For lifting, moving and sorting material

- reinforced housing incl. backplate
- grab made of heavy-duty steel
- bronze bushings
- cylinder max. 250 bar
- slew ring incl. motor, valves and hydraulic hoses

ROTARY CULTIVATOR

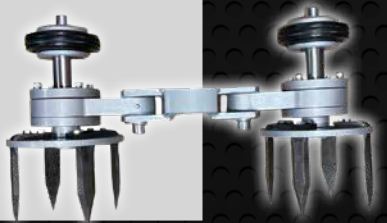
For loosening, piercing and aerating the ground soil

- 8 double-edged blades made of high-grade steel
- rotatable in both directions

ROTARY CULTIVATOR SPECIAL

For loosening, piercing and aerating the ground soil

- 8 double-edged blades made of high-grade steel
- rotatable in both directions
- double the speed: rotates in and around itself
- fits only Black Splitter S2 + S2X



ROOT PLOW

For planing stumps and roots

- made of 12 mm Hardox steel
- functional from both sides
- applicable from the side, from behind and from below at different heights



GROUND SCREW ACCESSORIES

Flat Post Support: galvanized support for post wood protection and concrete-free foundation construction

Draw Hook: galvanized hook for fixing tents and marquees

Braced Post Support: galvanized support for wood protection, available in diameters: 100 mm - 120 mm - 140 mm



ACCESSORIES & ADD-ON KITS

MIXING DRUM

For mixing cement and ready for direct pour. Capacity 165 L



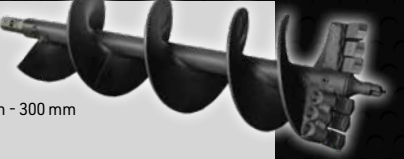
AUGER ADAPTER

- Available with or without universal joint
- reinforced straight adapter (>12000 Nm) with hub for auger
- with hub for auger shaft connection hex SW 41
- with hub for auger shaft connection Stihl BT 360 shaft connection hex SW41



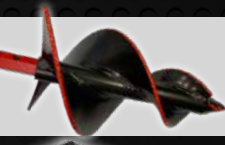
AUGER WITH CARBIDE TEETH OR CUTTING BLADES

- carbide teeth or cutting blades and pilot are replaceable
- shaft connection hex SW 41
- effective length 1000 mm
- bore head double-edged and hardened
- available in diameters: 100 mm - 200 mm - 300 mm
- Custom manufacture also possible!



PLANT AUGER

- diameter 400 mm
- effective length 500 mm
- shaft connection hex SW 41
- double-edged and hardened
- Custom manufacture also possible!



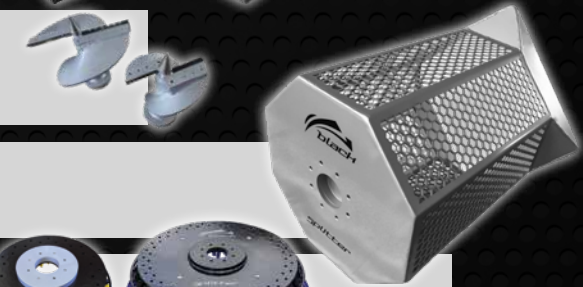
EXCAVATOR BRACKETS

- Lehnhoff, Schaeff, Euroaufnahme
- Custom manufacture according to drawing also possible!



STUMP GRINDER

- blades and pilot are replaceable
- available with smooth or hardox blades
- available in diameters: 300 mm - 400 mm - 500 mm



SCREENING BASKET

- For washing gravel or for sieving topsoil
- Custom manufacture also possible!



STEEL BROOM

- optional and replaceable coated steel brushes or reinforced synthetic brushes
- available in diameters: 750 mm with 32 brushes or 950 mm with 64 brushes



GROUND SCREW & ADAPTER

Enables the vertical placement of a mounted object without concrete

- ideally suited for meadows, sand, gravel, clay, rocky soils and packed earth
- galvanized shaft Ø89 mm, wall strength 2.75 mm
- high load capacity and eco-friendly
- available in three lengths: 800 mm - 1000 mm - 1200 mm
- ground screw adapter required



ADD-ON ADAPTER S2

Enables other accessories (e.g. timber grab, rake, tree shears, etc.) to be bolted onto the machine

- fits only Black Splitter S2



RAKE

For pulling or pushing loose branches, roots or residual wood

- made of Hardox steel
- changeable mount
- optional with 5 or 7 prongs



HEAD OFFICE

BLACK SPLITTER GMBH

Inh. Siegfried Brehm - Proprietor
Zum Ritzhagen 9
34508 Willingen / Germany

Telefon: +49 (0) 5632 / 4594

Telefax: +49 (0) 5632 / 966621

Mobil: +49 (0) 160 / 5559797

E-Mail: info@blacksplitter.de

BRANCH OFFICE

BLACK SPLITTER GMBH

Kevin Black - General Manager
Am Ziegelgrund 31
34497 Korbach

Telefon: +49 (0) 5631 / 6202140

Mobil: +49 (0) 151 / 17505350

E-Mail: k.black@blacksplitter.de



VIDEO CLIPS OF OUR PRODUCTS AVAILABLE
AT YOUTUBE UNDER: BLACK SPLITTER

www.lange-werbeagentur.de



black splitter

Holzspalter · Baggerspalter



THE IDEAL MACHINE FOR SPLITTING LOGS AND DRILLING HOLES

DIRECT MOTOR-DRIVEN

BLACK SPLITTER
S1 0.8 - 6 metric tons

Weight: 106 kg

Cone: cone tip made of chromium steel, double shear thread, 200 mm diameter, two parts, 24 mm thread pitch

Hydraulic Motor: max. torque 2338 Nm

Motor Shaft: 100 mm diameter



BLACK SPLITTER
S1X 6 - 18 metric tons

Weight: 208 kg

Cone: chromium steel, double shear thread, 245 mm diameter, two parts, 24 mm thread pitch

Hydraulic Motor: max. torque 4020 Nm

Motor Shaft: 120 mm diameter, special steel



DIRECT MOTOR-DRIVEN

BLACK SPLITTER
S2 1 - 6 metric tons

Weight: 119 - 128 kg

Cone: chromium steel, double shear thread, 200 mm diameter, two parts, 24 mm thread pitch

Hydraulic Motor: optional with max. torque 2338 - 2475 - 4020 Nm

Motor Shaft: 100 mm diameter

All accessories possible with the S2!



BLACK SPLITTER
S2X 6 - 10 metric tons

Weight: 152 - 161 kg

Cone: chromium steel, double shear thread, 245 mm diameter, two parts, 24 mm thread pitch

Hydraulic Motor: optional with max. torque 2338 - 2475 - 4020 Nm

Motor Shaft: 100 mm diameter

WITH GRAB

BLACK SPLITTER
SG1 1.5 - 6 metric tons
optional up to 8 metric tons

Weight: 166-178 kg

Cone: chromium steel, double shear thread, 200 mm diameter, two parts, 24 mm thread pitch

Hydraulic Motor: optional with max. torque 2338 - 2475 Nm

Motor Shaft: 100 mm diameter

Hydraulik Cylinder: 2 x 3500 kg compressive force

Grab Arms: made of Hardox steel mounted in sintered bushings, pins and bolts are surface hardened

Various Models Possible: manufactured for excavators with one or two hydraulic control circuits

EXTRA: Special system for splitting inside the grab arms available for one hydraulic control circuit



BLACK SPLITTER
SG3 3.5 - 8 metric tons

Weight: 400 kg

Cone: chromium steel, double shear thread, 245 mm diameter, two parts, 24 mm thread pitch

Hydraulic Motor: max. torque 2475 Nm

Motor Shaft: made of carbon tool steel, 100 mm diameter

Hydraulik Cylinder: 4 x 3500 kg compressive force

Grab Arms: made of Hardox steel with attached steel teeth



WITH PLANETARY GEARS

BLACK SPLITTER
SB 3 - 12 metric tons

Weight: 240 kg

Cone: chromium steel, quadruple shear thread, 300 mm diameter, two parts, 48 mm thread pitch

Hydraulic Motor: planetary gears

Torque: max. 12000 Nm

Motor Shaft: 100 mm diameter

BLACK SPLITTER
SBX 12 - 28 metric tons

Weight: 620 kg

Cone: chromium steel, quadruple shear thread, 400 mm diameter, 48 mm thread pitch

Hydraulic Motor: planetary gears

Torque: max. 30000 Nm

Motor Shaft: 130 mm diameter

BLACK SPLITTER
SBXX 25-40 metric tons

Weight: 890 kg

Cone: chromium steel, quadruple shear thread, 400 mm diameter, 48 mm thread pitch

Hydraulic Motor: planetary gears

Torque: max. 60000 Nm

Motor Shaft: 170 mm diameter



		CONE SPLITTER									
WHICH ACCESSORY FOR THE CONE SPLITTER?	ACCESSORY	S1	S1X	S2	S2X	SG1	SG3	SB	SBX	SBXX	
		Stump Grinder	✓	✓	✓	✓	✓		✓	✓	
		Steel Broom	✓	✓	✓	✓	✓		✓		
		Screening Basket	✓	✓	✓	✓	✓		✓		
		Mixing Drum	✓	✓	✓	✓	✓		✓		
		Auger Adapter without U-Joint	✓	✓	✓	✓	✓				
		Auger Adapter with U-Joint	✓	✓	✓	✓	✓				
		Reinforced Auger Adapter							✓	✓	
		Auger with Cutting Blades	✓	✓	✓	✓	✓		✓	✓	
		Auger with Carbide Teeth	✓	✓	✓	✓	✓		✓	✓	
		Plant Auger & Adapter	✓	✓	✓	✓	✓		✓		
		Rotary Cultivator	✓	✓	✓	✓	✓		✓		
		Rotary Cultivator Special			✓	✓					
		Add-On Adapter			✓						
		Rake optional with 5 or 7 prongs			✓						
		Log Grab			✓						
		Ground Screw & Adapter	✓	✓	✓	✓	✓		✓		