

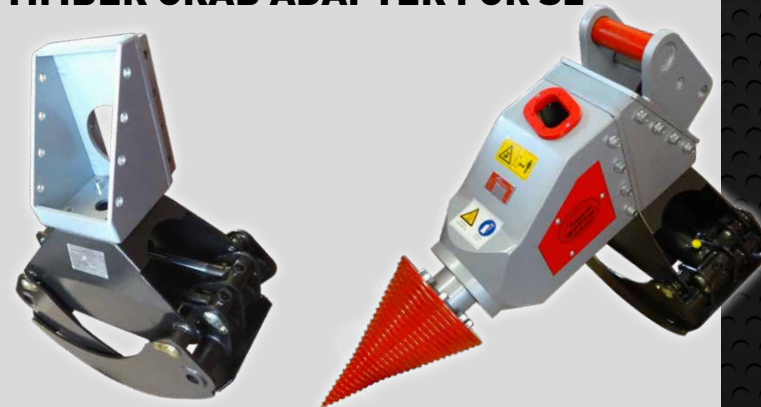
NEW PRODUCTS

RETROFIT KIT FOR SG1

enables machine rotation (for two auxiliary hydraulic circuits)



TIMBER GRAB ADAPTER FOR S2



TIMBER GRAB WITH ROTATOR

Opening width: 1030 mm
Rotator: 1 ton

**POWER
EXTREME**



MIXING DRUM

For mixing cement and ready for direct pour
available in sizes: 130 L - 145 L - 165 L



AUGER ADAPTER

Available with or without universal joint
· with hub for auger shaft connection hex SW 41
· with hub for auger shaft connection Stihl BT 360

AUGER WITH CARBIDE TEETH OR CUTTING BLADES

· carbide teeth or cutting blades and pilot are replaceable
· shaft connection hex SW 41
· effective length 1000 mm
· bore head double edged and hardened
· available in diameters: 100 mm - 200 mm - 300 mm
Made-to-order also possible!



EXCAVATOR BRACKETS

· Lehnhoff, Schaeff
Made-to-order according to drawing also possible!



STUMP GRINDER

· blades and pilot are replaceable
· available in diameters: 300 mm - 500 mm
· also available with ridged blades (requires only half the power)



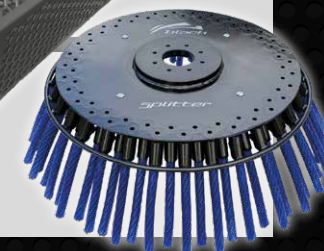
SCREENING BASKET

· For washing gravel or for sieving topsoil (various sizes available)
Made-to-order according to drawing also possible!



STEEL BROOM

· With replaceable coated steel brushes
· available in diameters: 450 mm with 32 steel brushes
· 700 mm with 64 steel brushes



HEADQUARTERS

BLACK SPLITTER GMBH

Inh: Siegfried Brehm
Zum Ritzhagen 9
34508 Willingen

Telefon: +49 (0) 5632 / 4594
Telefax: +49 (0) 5632 / 966621
Mobil: +49 (0) 160 / 5559797
E-Mail: info@blacksplitter.de

BRANCH OFFICE

BLACK SPLITTER GMBH

Kevin Black - General Manager
Am Ziegelgrund 31
34497 Korbach

Telefon: +49 (0) 5631 / 6202140
Mobil: +49 (0) 151 / 17505350
E-Mail: k.black@blacksplitter.de



VIDEO CLIPS OF OUR PRODUCTS AVAILABLE
AT YOUTUBE UNDER: BLACK SPLITTER

www.lange-werkeagentur.de



THE IDEAL MACHINE FOR SPLITTING TIMBER AND DRILLING HOLES



BLACK SPLITTER

SG1 1,5 - 6 Metric Tons
optional up to 8 Metric Tons

Weight: 166-178kg

Cone: chromium steel, double shear thread, 200 mm diameter, two parts, 24 mm thread pitch

Hydraulic Motor: optional with max. torque 2338 - 2475 - 4020 Nm

Motor Shaft: 100 mm diameter

Hydraulic Cylinder: 2 x 3500 kg compressive force

Grab Arms: manufactured from Hardox steel mounted in sintered bushings, pins and bolts are surface hardened

Various Models Possible: manufactured for excavators with one or two hydraulic control circuits

EXTRA: special system for splitting inside the grab arms available for one hydraulic control circuit

BLACK SPLITTER

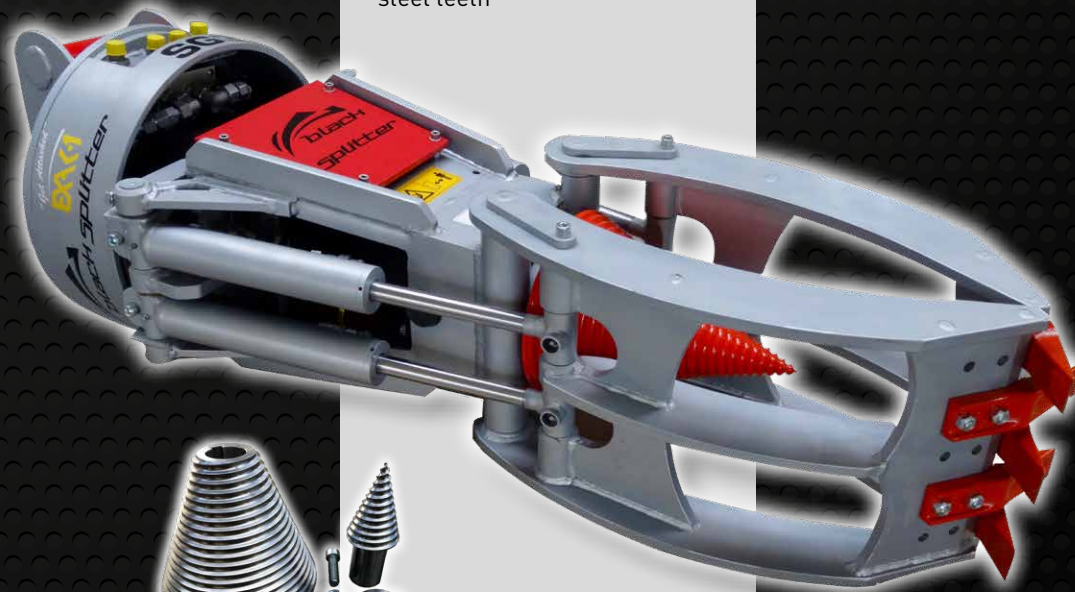
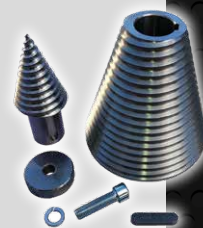
S2 1 - 6 Metric Tons

Weight: 119 - 128kg

Cone: chromium steel, double shear thread, 200 mm diameter, two parts, 24 mm thread pitch

Hydraulic Motor: optional with max. torque 2338 - 2475 - 4020 Nm

Motor Shaft: 100 mm diameter



BLACK SPLITTER

SG3 3,5 - 8 Metric Tons

Weight: 370 - 410kg

Cone: chromium steel, double shear thread, 245 mm diameter, two parts, 24 mm thread pitch

Hydraulic Motor: optional with max. torque 2338 - 2475

Motor Shaft: manufactured from carbon tool steel, 100 mm diameter

Hydraulic Cylinder: 4 x 3500 kg compressive force

Grab Arms: manufactured from Hardox steel with attached steel teeth

BLACK SPLITTER

S2X 6 - 12 Metric Tons

Weight: 152 - 161kg

Cone: chromium steel, double shear thread, 245 mm diameter, two parts, 24 mm thread pitch

Hydraulic Motor: optional with max. torque 2338 - 2475 - 4020 Nm

Motor Shaft: 100 mm diameter



**POWER
EXTREME**

BLACK SPLITTER

S2G 8 - 25 Metric Tons

Weight: 400kg

Cone: chromium steel, quadruple shear thread, 300 mm diameter, two parts, 45 mm thread pitch

Hydraulic Motor: planetary gears

Torque: 12000 Nm

Motor Shaft: 170 mm diameter



BLACK SPLITTER

SB 3 - 12 Metric Tons
optional up to 15 Metric Tons

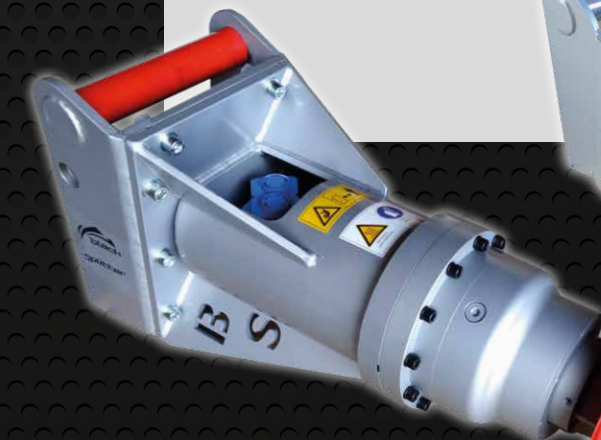
Weight: 270kg

Cone: chromium steel, quadruple shear thread, 300 mm diameter, two parts, 48 mm thread pitch

Hydraulic Motor: planetary gears

Torque: 12000 Nm

Motor Shaft: 100 mm diameter



**POWER
EXTREME**

BLACK SPLITTER

S1 0,8 - 6,5 Metric Tons

Weight: 106kg

Cone: chromium steel, double shear thread, 200 mm diameter, two parts, 24 mm thread pitch

Hydraulic Motor: max. torque 2400 Nm

Motor Shaft: 100 mm diameter